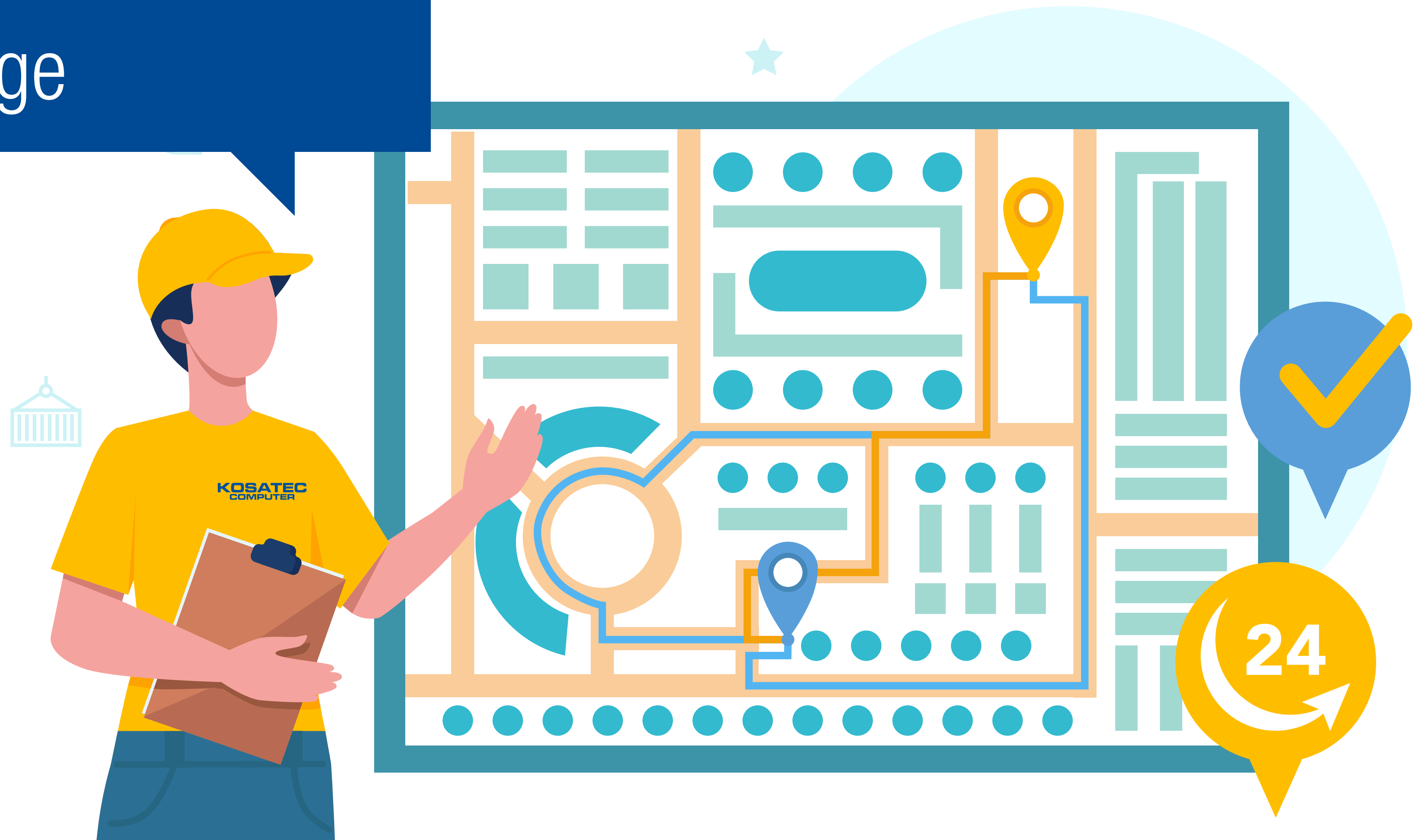


Electronic Data Interchange



**EVERYONE IS TALKING
ABOUT DIGITALIZATION**

WE DO IT!

We help you stay competitive in the future.





WHAT IS

EDI?

Electronic **D**ata **I**nterchange

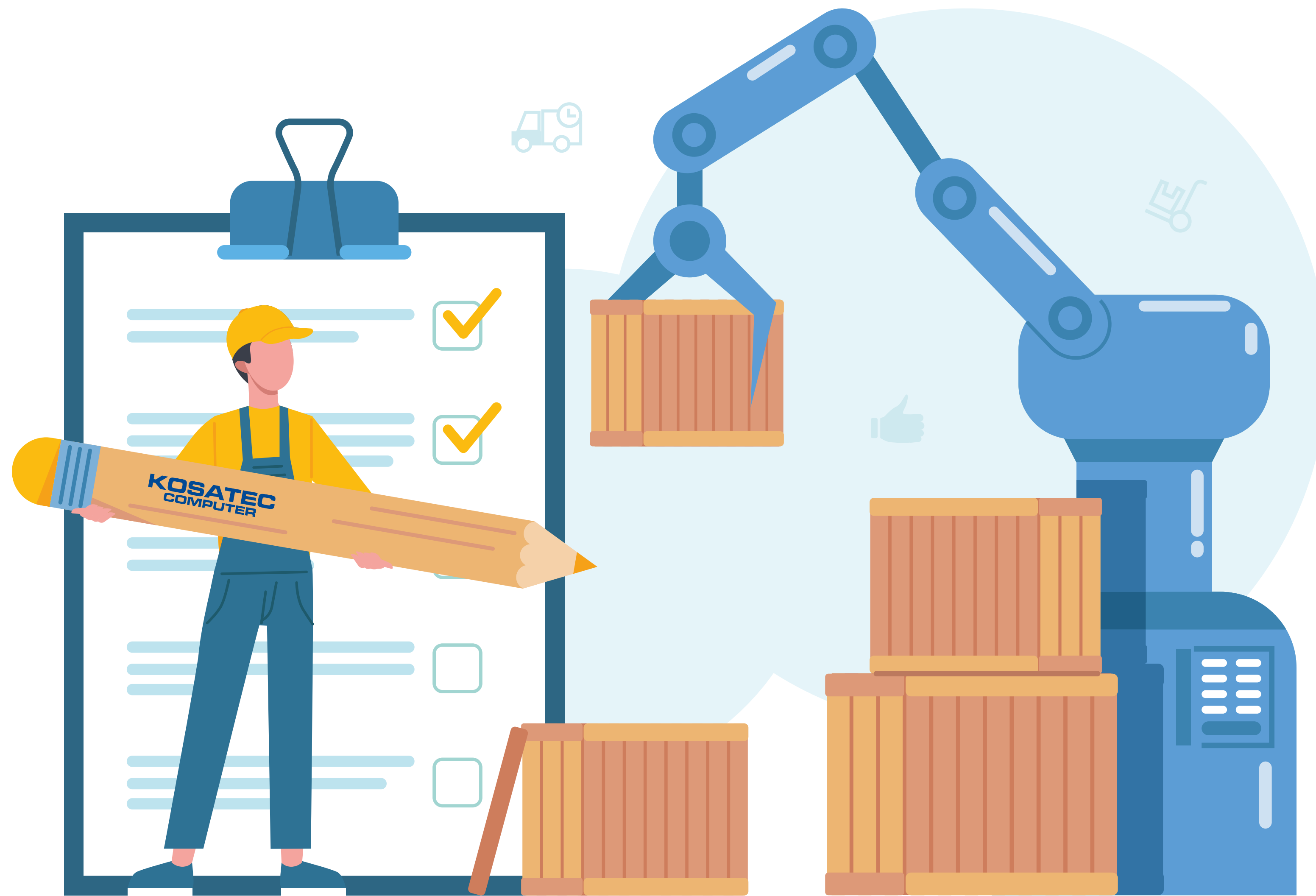
EDI is the automated exchange of structured information between business partners via digital interfaces.

WHAT ARE THE ADVANTAGES OF

EDI?

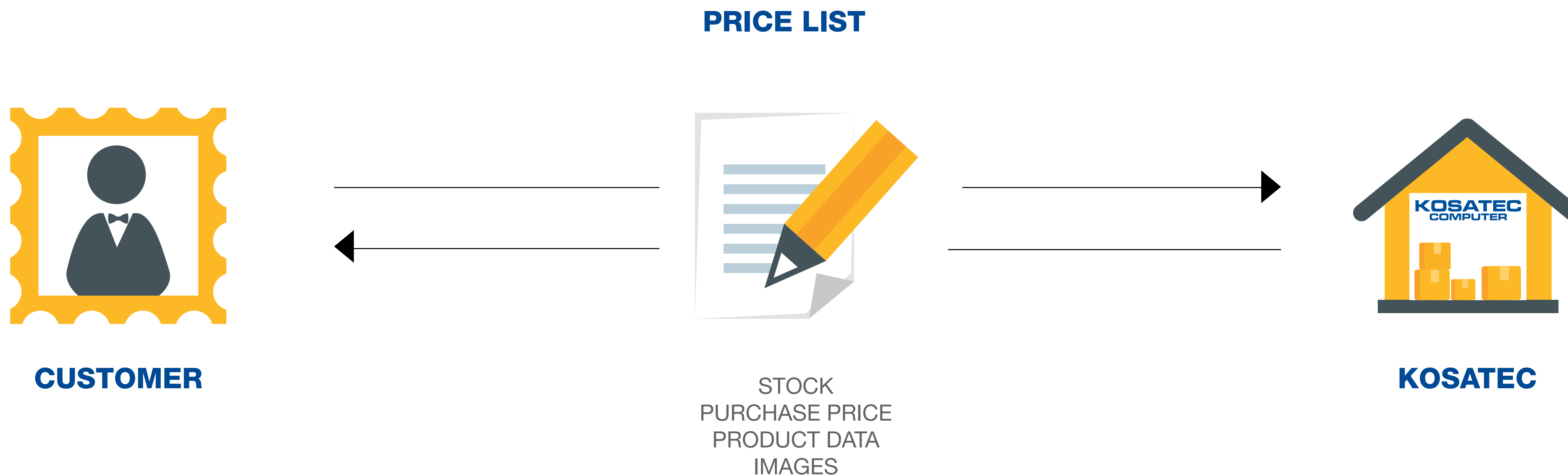
- Digitalization of purchasing processes
- Increase of efficiency
- Workload reduction
- Fast transmission times
- High data accuracy
- Error reduction
- Cost reduction

Direct data exchange between your purchasing software and our systems.



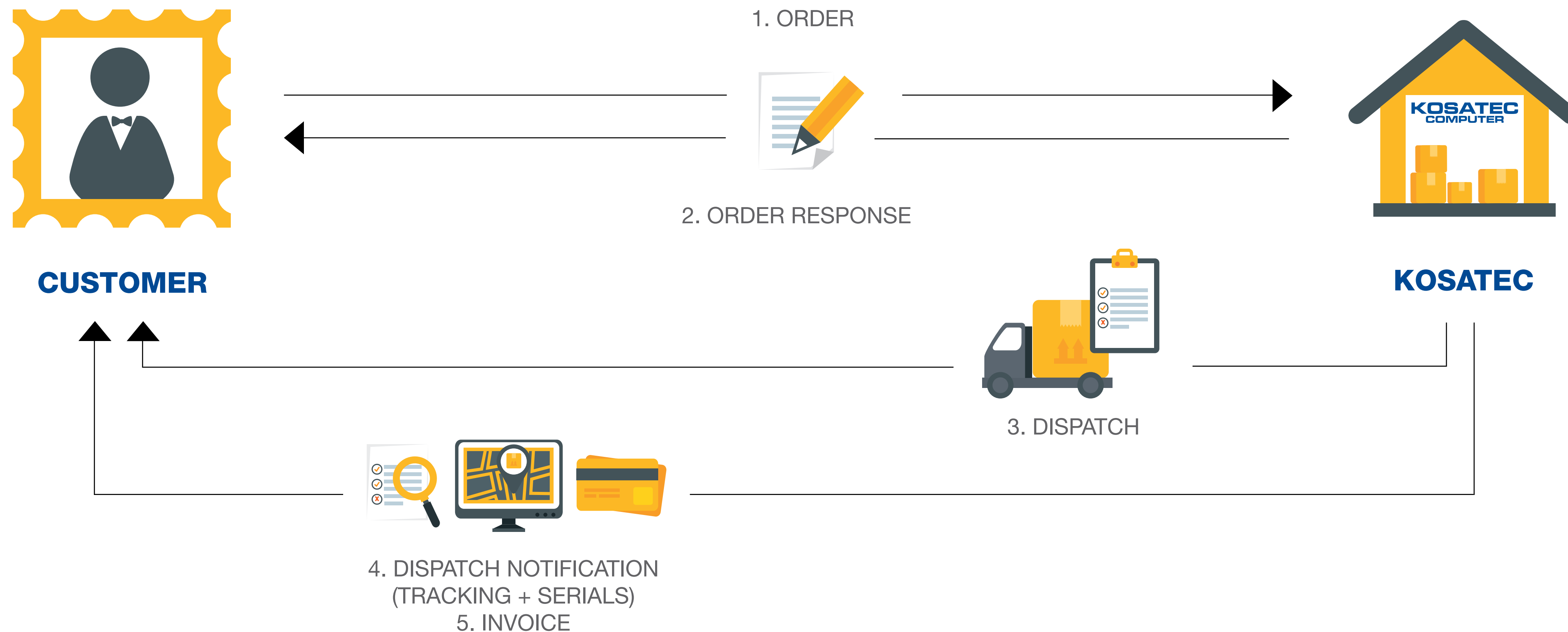
HOW DOES EDI WORK?

REQUEST OF PRODUCT DATA



HOW DOES EDI WORK?

ORDER PROCESS



DROPSHIPPING

- Reliable dropshipping
- Next day delivery*
- Delivery note with your logo
- Package numbers
- Serial numbers
- Personal contact
- Special orders
- IT distribution since 1993

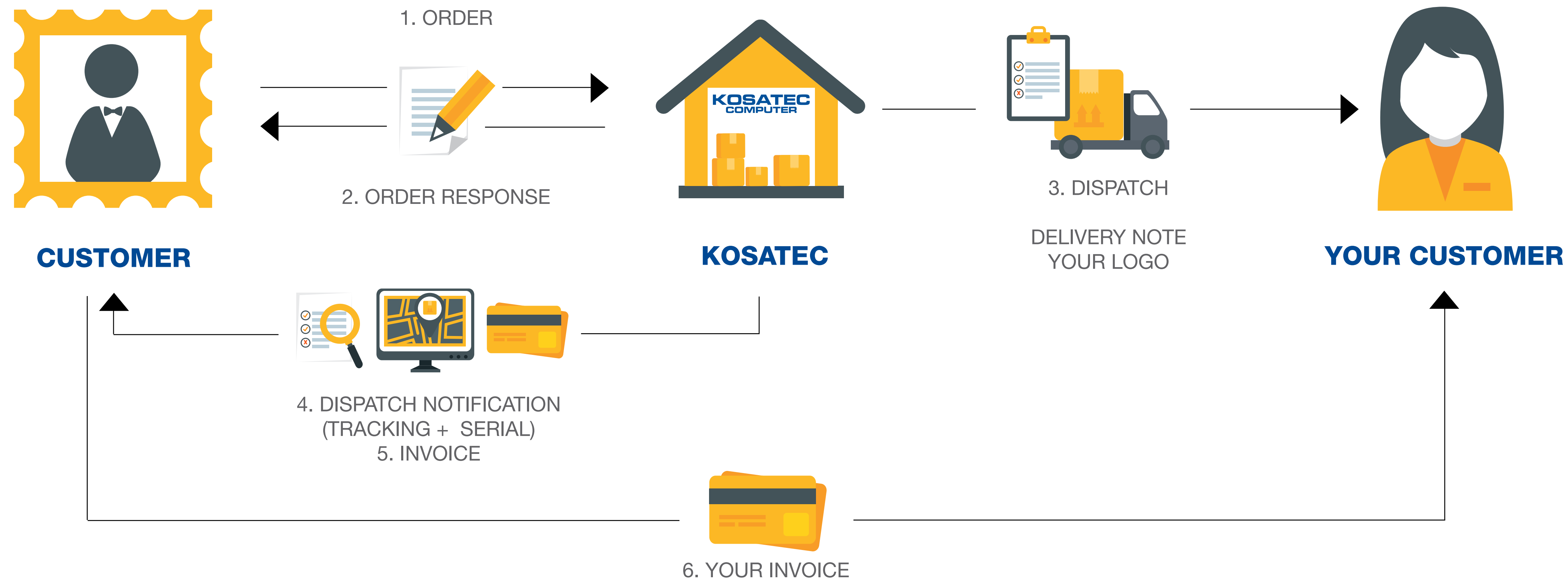
We are your reliable partner in IT distribution.
Your satisfaction is our main goal.

* Orders before 6.30 p.m., delivery within Germany.



HOW DOES EDI WORK?

DROPSHIPING



EDI AT

KOSATEC

We offer the following process steps

1. Price list / product catalog
2. Real-time query
3. Order
4. Oder response
5. Order overview
6. Dispatch notification with package numbers
7. Invoice / credit note
8. Serial numbers

Individual formats and connections

Free adaption to your requirements



KOSATEC
COMPUTER

Formats

XML, CSV, TXT, JSON

openTRANS

EDIFACT

BMEcat

Your format

Transfer

HTTP / HTTPS

FTP / SFTP / FTPS

AS2

NEXT STEP

KOSATEC
COMPUTER

GET STARTED TOGETHER!

**We would be happy to plan a short-term project with you.
Our EDI team will be happy to contact you.**

Or take a look at our technical documentation:

www.kosatec.de/e-services





CONTACT

WE ARE HERE
FOR YOU

KOSATEC **EDI Onboarding Team**

ecommerce@kosatec.de

+49 531 23544 7000